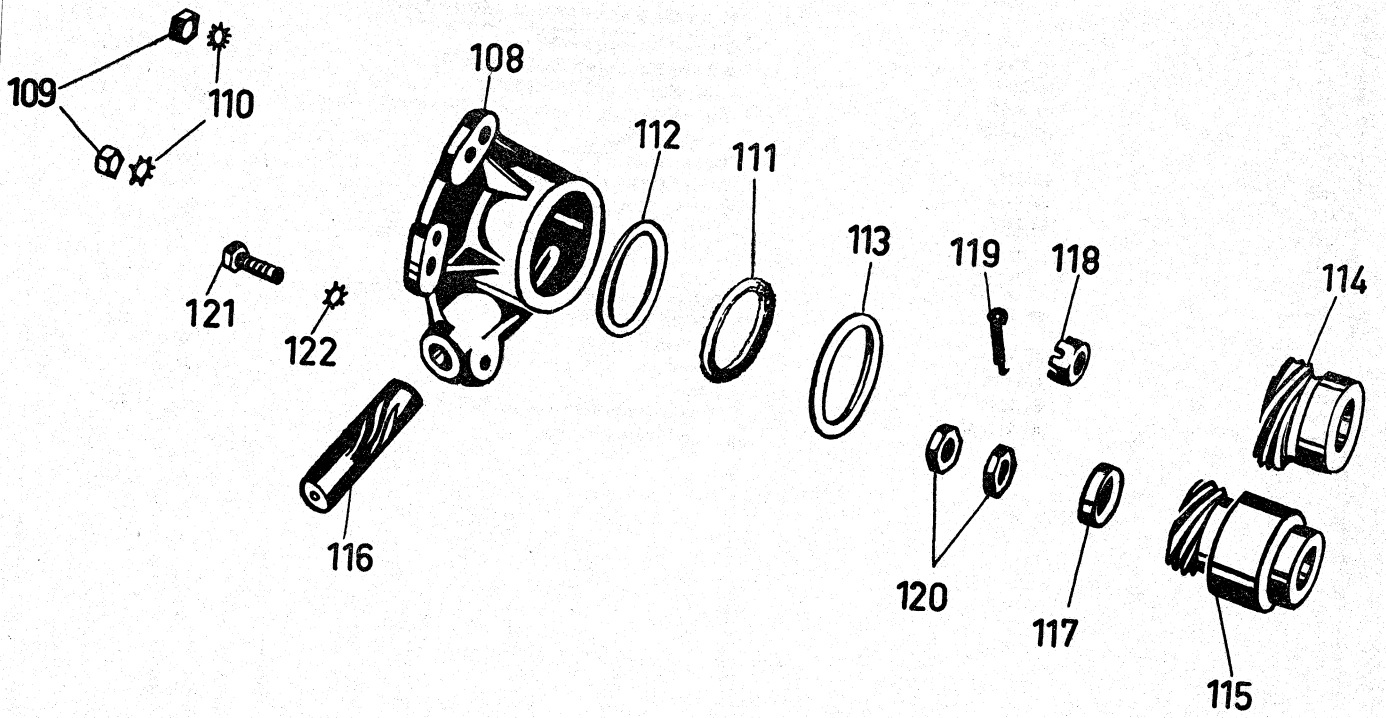
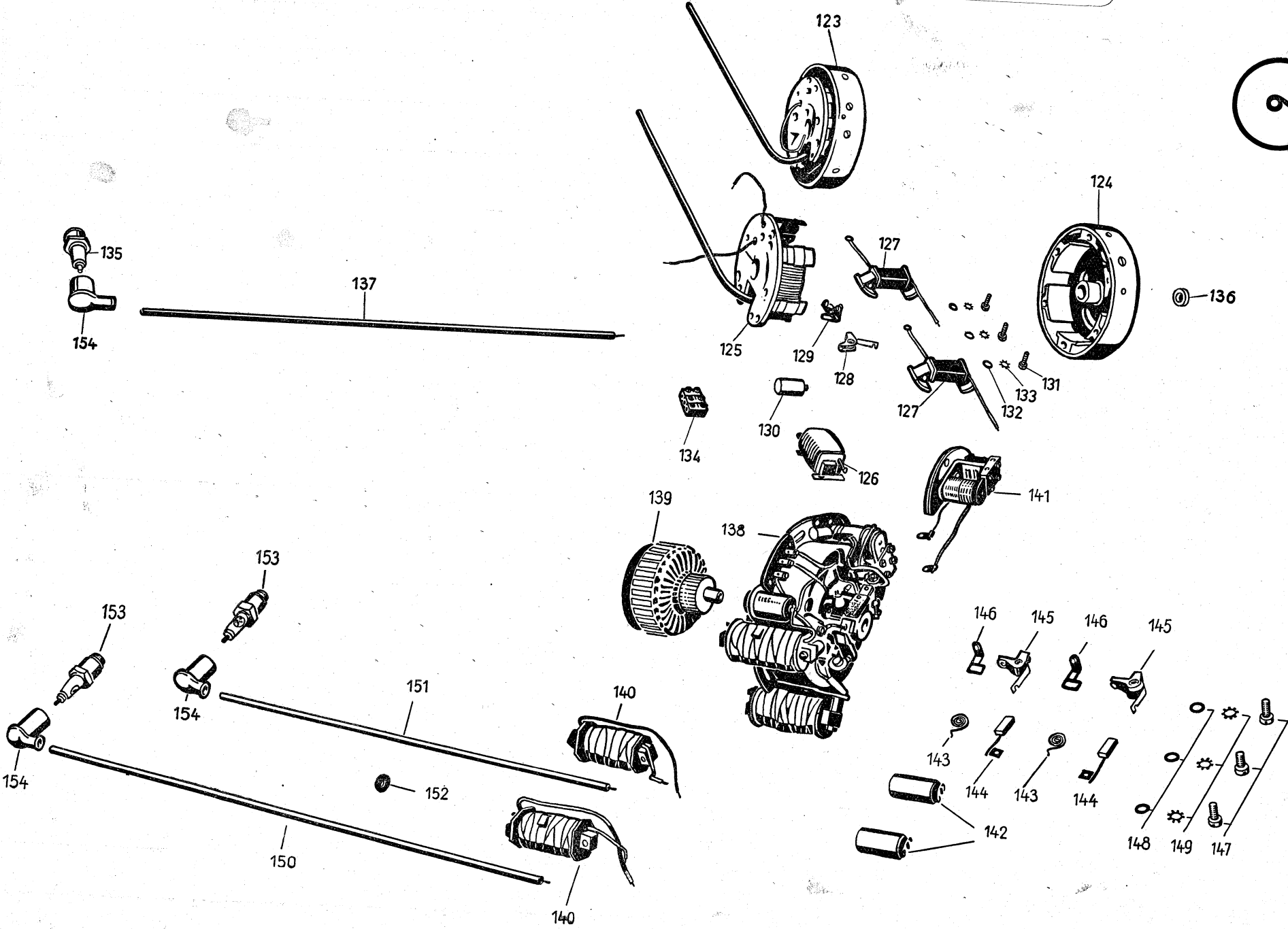
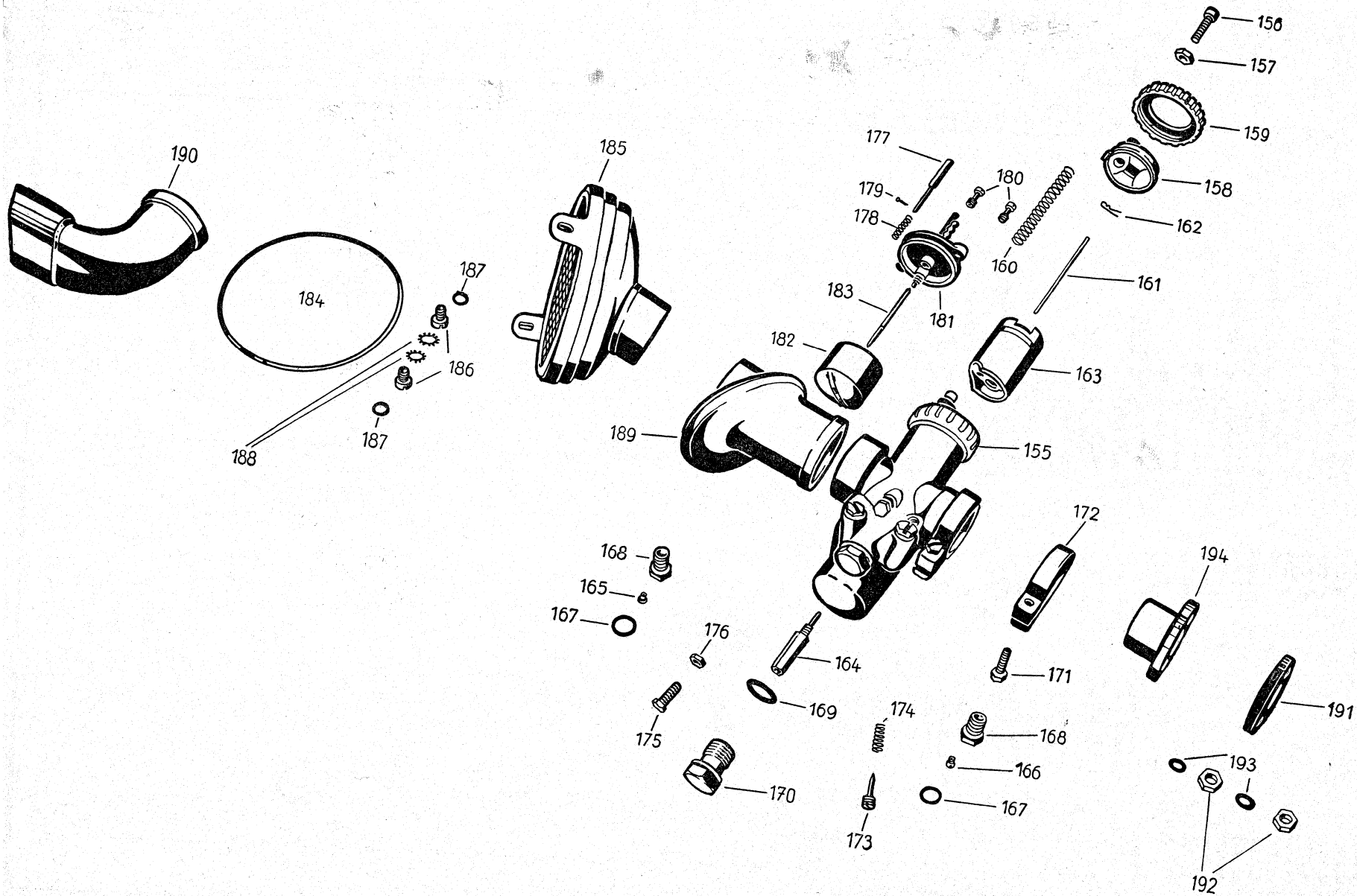
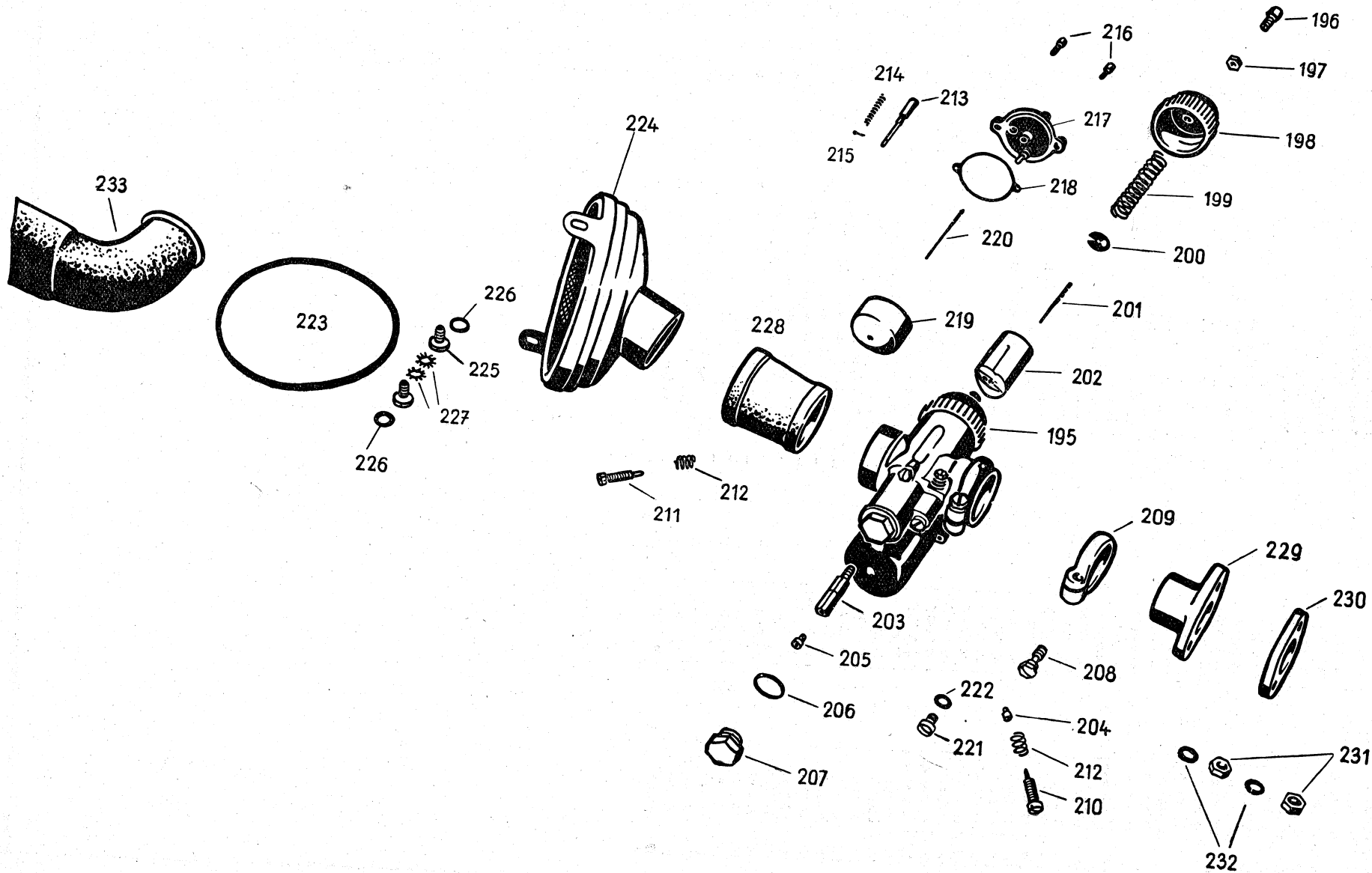


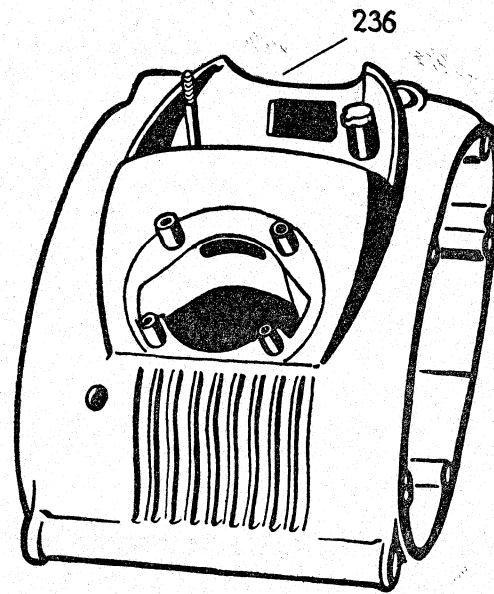
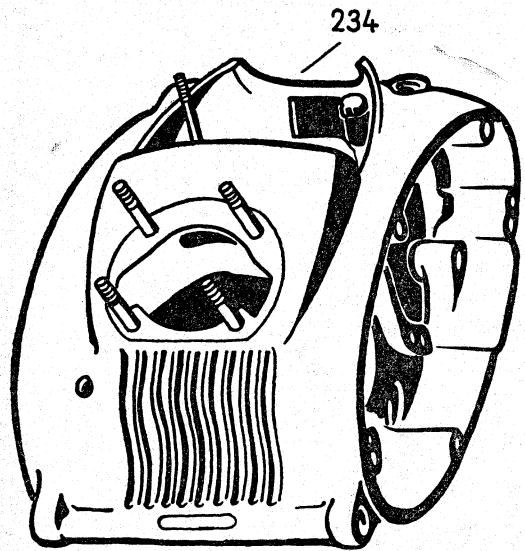
5



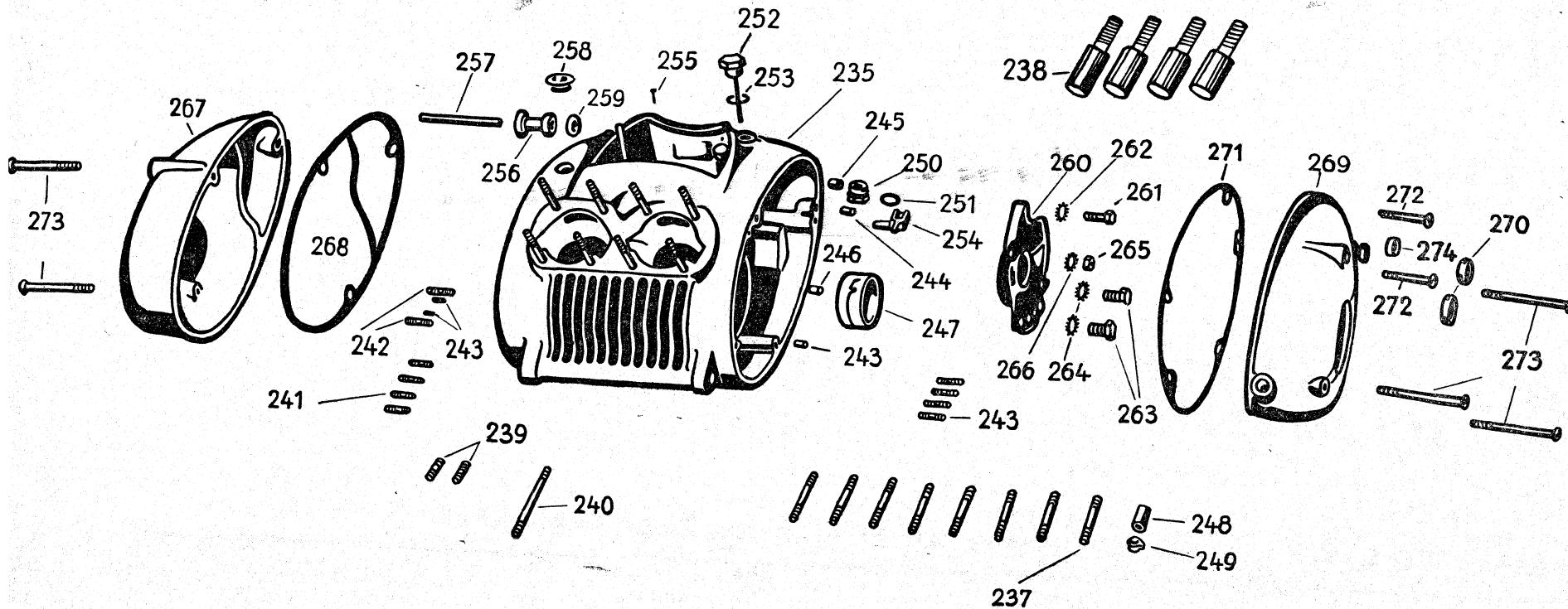
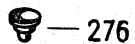


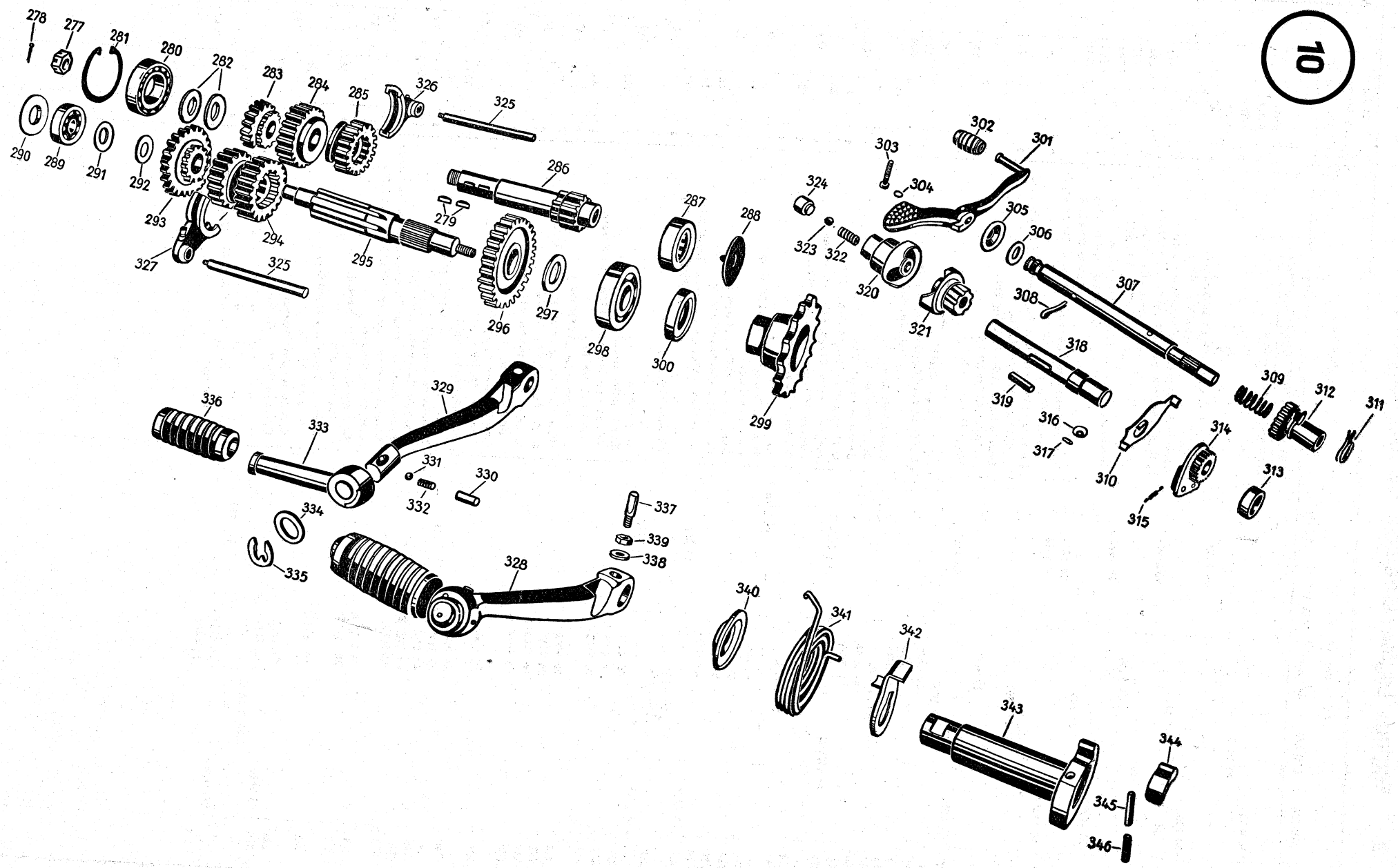


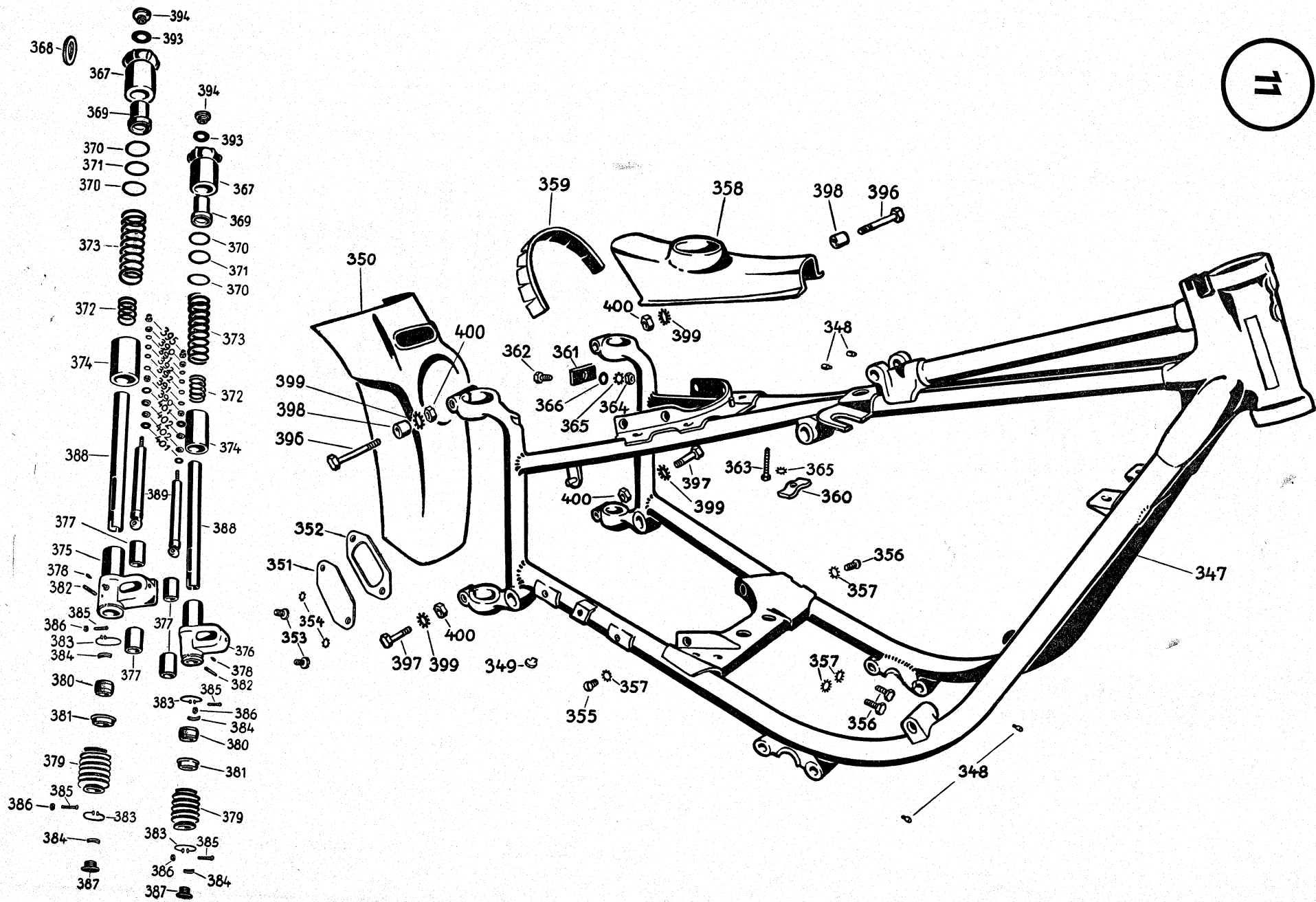


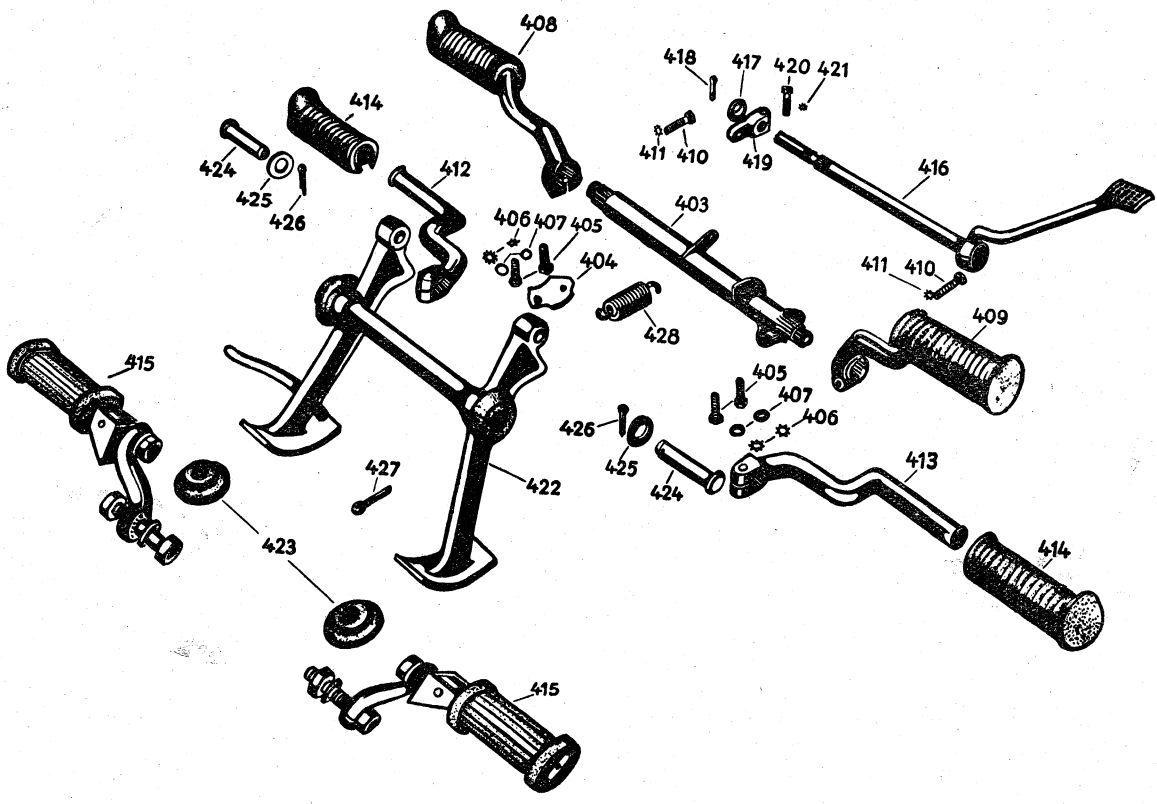


6









Only the use of

**ADLER
ORIGINAL MOTOR CYCLE SPARE PARTS**

ensures that replacements are fully up to the exacting standards of quality imposed by the ADLERWERKE.

**ADLER
ORIGINAL MOTOR CYCLE SPARE PARTS**

are parts either made by the Adlerwerke themselves in compliance with all methods and specifications of genuine quality production or manufactured by sub-contractors according to drawings or data of the Adlerwerke, but subjected before acceptance to the same tests and inspections as are prescribed for parts made at the Adlerwerke themselves.

**ADLERWERKE vorm. HEINRICH KLEYER
AKTIENGESELLSCHAFT**

